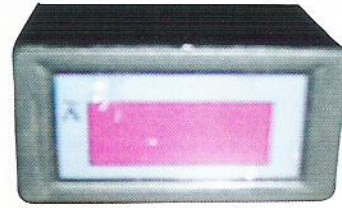


HMGE08 简易型数显电压电流表 SIMPLE DIGITAL VOLTMETER AMMETER**一、380V表头 (380V Meter Header)**

此表为三相四线，一条零线、三条火线，三条火线分别为A相、B相、C相，每条火线对应一个指示灯，如果三个灯都亮起来表示通电正常，如果有某一相缺相，则相应的指示灯不亮，同时转换开关拨至A和B、A和B和C，连通电压表都显示相对应的电压，量程范围0-500V。

This metering header is three-phase four-wire, a zero line, three FireWire. The three FireWire respectively A phase, B phase, C phase, each FireWire corresponding to a guiding light, if the three lights are all lighting up that means the normal power, while switch pull to the A and B, A and C, A and B are connected voltmeter shows the corresponding voltage., the metering range 0-500v

二、220V表头 (220V Meter Header)

此表为单相表头，一条零线，一条火线，三位数码管显示对应的电压，表示通电正常，电路不通时，数码管不显示。量程范围为250V。

This table header for the single-phase, a zero line, one FireWire, three digitals display the right voltage said power normal ;when the circuit barrier, the digital controls are not displayed.The metering range is 250V

三、电流表头 (Ammeter Head)

此表为单相电流表，有四条线，两条工作电源，输入为交直流8-12V；两条测量。在没有测量的情况下数码管显示为000；接入测量时显示相对应的电流，表示通电正常。量程范围为0-30A。

This Ammeter Head is a single-phase ammeter, has four lines, two working power supply, input for the AC -DC 8-12V; Two measurements. In the case of no measurement digital display is 000;Access measurements show the corresponding current, said normal power.The metering range is 0-30A.

四、三相转换电流表 Three-phase conversion ammeter

此表为三相测量电流表，共8条线，2条工作电源，6条测量，测量2条为一组，一组为一相，当转换开关拨至A时，数码管显示A相电流；转换开关拨至B时，数显管显示B相电流；拨至C时显示C相电流。量程范围为0-30A。

This table is three-phase measuring ammeter, a total of 8 lines, 2 Power Supply, 6 measurement, measuring 2 to a group, a group for a phase, when the changeover switch dial to A, digital display A-phase current; conversion switch to B, the digital display B-phase current control; allocated to C, show that C-phase current. The metering range is 0-30A

Over several tables in order to design beautiful, Case should set up two sets of mold, a single-phase, a three-phase.